

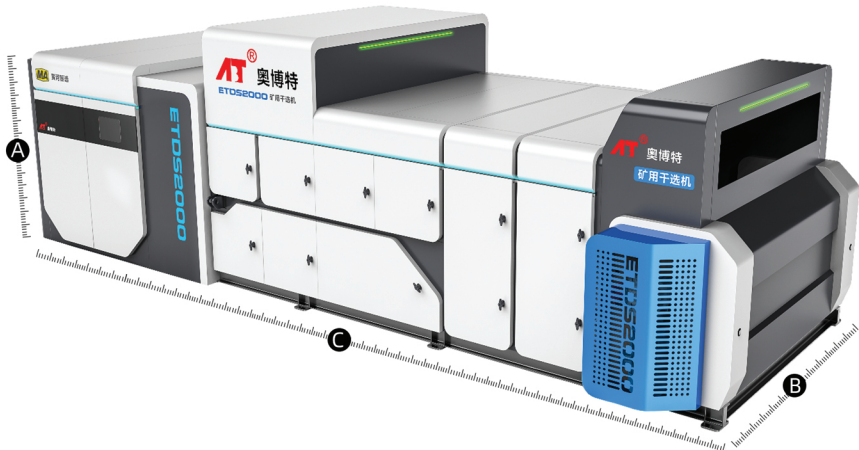
OBOTE Intelligent Dry Ore Sorter

Flagship
Agency
Product

SENSOR-BASED ORE SORTING SINCE 2013

Product Dimensions

OBOTE Intelligent Dry Ore Sorter	
A	2271-2885 mm
B	2230-4844 mm
C	7800-12210mm



Product Specifications

Ore Type	Size Range	Model	Belt Width	Capacity	Power	Dimensions
Metallic Ores Coal Gangue, Kaolin, and Non-metallic Ores	20-50mm	ETDS-1200	1200mm	40-50t/h	7.5kw	7800*2230*2271
		ETDS-2000	2000mm	60-90t/h	15kw	7956*2760*2530
	50-300mm	ETDS-1200	1200mm	60-100t/h	7.5kw	12210*2422*2885
		ETDS-1400	1400mm	80-120t/h	22kw	12210*2826*2885
		ETDS-1600	1600mm	100-120t/h	22kw	12210*3229*2885
		ETDS-1800	1800mm	140-180t/h	22kw	12210*3633*2885
		ETDS-2000	2000mm	160-200t/h	32kw	12210*4037*2885
		ETDS-2400	2400mm	200-250t/h	45kw	12210*4844*2885

* Specifications are indicative and subject to change. Exact data available on request.

Product Overview

The OBOTE Intelligent Dry Ore Sorter is a high-efficiency solution for coal, metallic ores, and non-metallic minerals. By combining dual-energy X-ray with AI algorithms, it enables precise, automated separation by density, composition, and particle size. Featuring a fast-response electromagnetic valve system, low energy consumption, and cloud-based monitoring, it ensures stable operation and continuous performance optimisation. With zero water usage, reduced emissions, and lower operating costs, it improves ore grade and supports sustainable mining development.

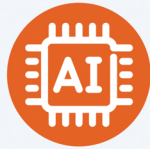


Key Features



Water-free & Eco-friendly

Dry sorting process saves water and energy for greener mining.



Smart & Precise

Dual-energy X-ray imaging with AI algorithms for high-accuracy separation.



Efficient & Low Consumption

High-speed electromagnetic valves ensure stable operation with reduced air and energy use.



Wide Applicability

Suitable for coal gangue, metallic ores, non-metallic ores, and new energy minerals with one machine.



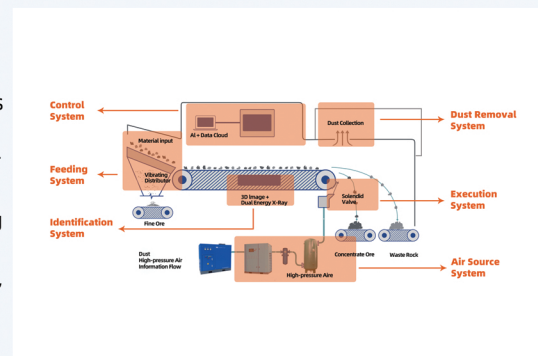
Cost Reduction & Increased Revenue

Improve grade and recovery rate, Reduce tailings waste.

Equipment Composition

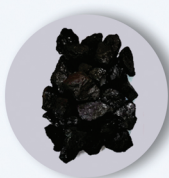
The OBOTE Intelligent Dry Ore Sorter integrates six core systems:

- **Feeding System**-A hopper and vibrating distributor for stable material feeding.
- **Identification System**-Dual-energy X-ray imaging with AI algorithms for precise ore recognition.
- **Execution System**-High-speed solenoid valves with compressed air for rapid and accurate sorting.
- **Control System**-User-friendly interface with cloud-enabled monitoring for efficient operation.
- **Air Source System**-Clean, high-pressure air supply for sorting, cooling, and pneumatic control.
- **Dust Removal System**-Explosion-proof dust extraction ensures safe, clean, and reliable operation.



Application

The OBOTE Intelligent Dry Ore Sorter has been widely applied in the efficient separation of:



Coal Gangue



Kaolin



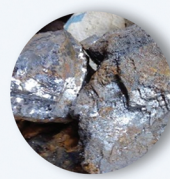
Iron Ore



Phosphate Ore



Lithium Ore



Lead-Zinc Ore



Fluorite Ore



More

